

OUR IMPACTS

In the last decade, we have:

SUPPORTED **over 750 jobs** in the Great Lakes

INVESTED **over \$48 million** in Great Lakes health & safety

COMMITTED **\$10 million** to clean drinking water

PREPARED **590 people** for Great Lakes STEM careers

DEDICATED **\$6 million** to advanced technology

DEVOTED **\$3 million** to invasive species research

FOCUSED **\$5 million** on forecasts for human safety



<https://ciglr.seas.umich.edu/>

P (734) 763-3010

E ContactCIGLR@umich.edu

FOLLOW US

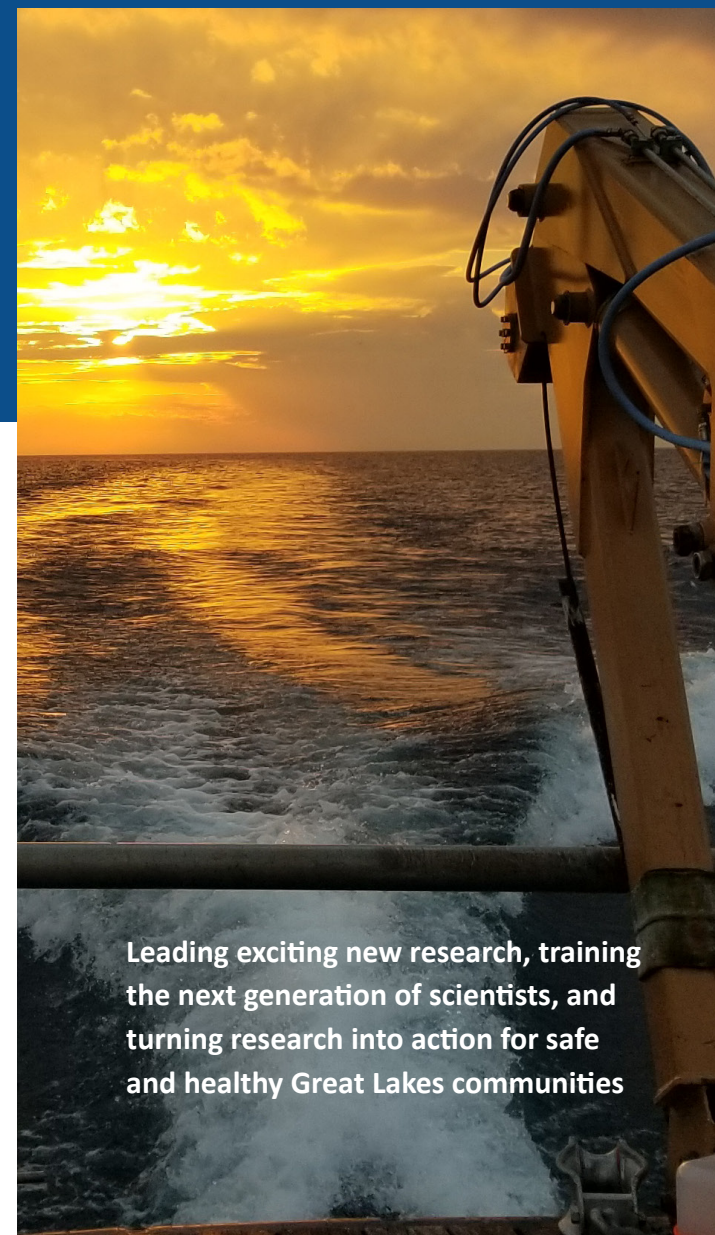
-  CIGLR.UMich
-  CIGLR_UM
-  ciglr_um
-  CIGLR um
-  ciglr_um

University of Michigan

440 Church Street
Ann Arbor, MI 48109-1041

Cooperative Institute for
Great Lakes Research

CIGLR
Great Lakes Science for Society



Leading exciting new research, training
the next generation of scientists, and
turning research into action for safe
and healthy Great Lakes communities

ABOUT CIGLR

The Cooperative Institute for Great Lakes Research (CIGLR) is a partnership between the National Oceanic and Atmospheric Administration (NOAA), universities, non-governmental agencies, and businesses. Together, we work to achieve environmental, economic, and social sustainability in the Great Lakes.

CIGLR consists of a Research Institute and a Regional Consortium:

The Research Institute is composed of a team of expert scientists who work closely with NOAA's Great Lakes Environmental Research Lab to address the most pressing Great Lakes sustainability challenges.

The Regional Consortium broadens the institute's research capacity, intellectual expertise, and geographic scope across the Great Lakes.

WE ARE

Turning Research into Action.

CIGLR's **ECO** Program transforms research into solutions for complex problems facing the Great Lakes.

Engagement

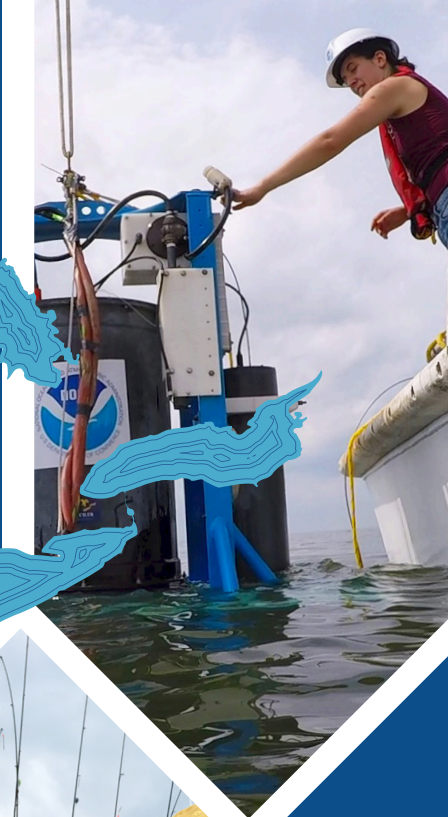
Bridging research and policy to support science-based decisions.

Career Training

Building a diverse and skilled workforce to tackle the toughest challenges.

Outreach & Communications

Connecting with communities to create a culture of stewardship.

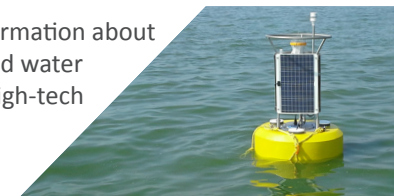


OUR RESEARCH



Observing Systems & Advanced Technology

Providing real-time information about Great Lakes weather and water through a network of high-tech automated equipment.



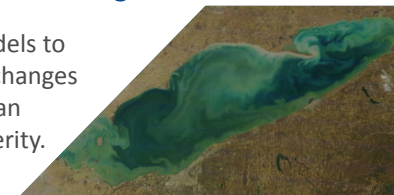
Invasive Species & Food Web Ecology

Tracking ecological communities from microbes to fish to understand how changes in biology will impact people and their environment.



Hydro-Meteorological & Ecosystem Forecasting

Developing reliable models to predict environmental changes that may threaten human health, safety, or prosperity.



Protection & Restoration of Resources

Safeguarding the Great Lakes' natural assets to secure a healthy, happy, and economically prosperous future.

