

**Do you know what this is?**

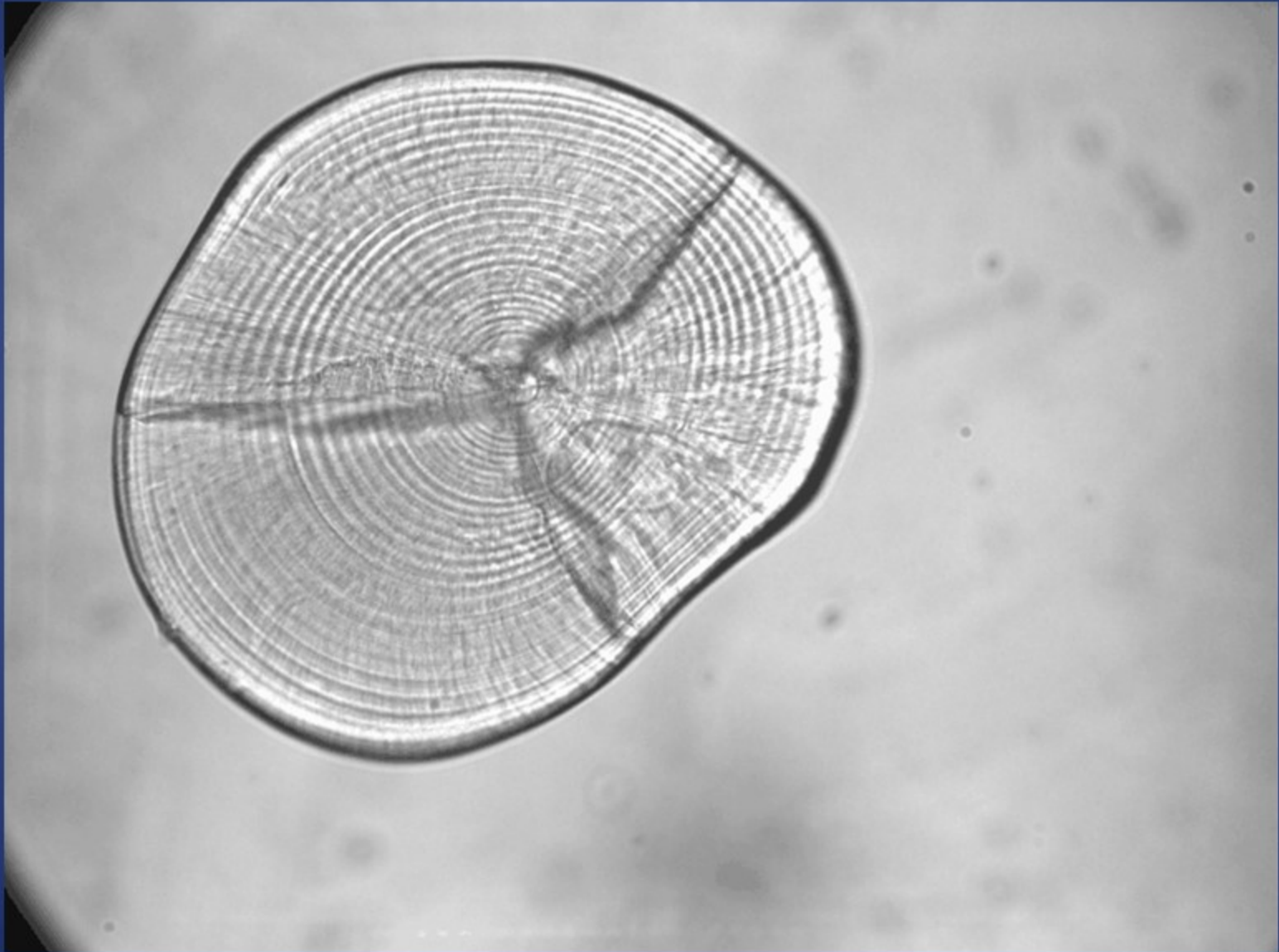
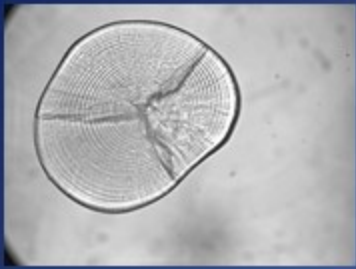
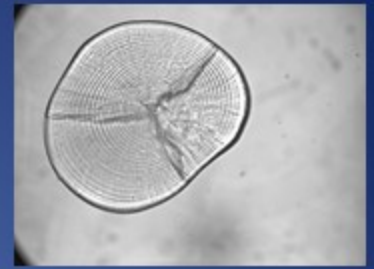


Photo credit: David Wells, CIGLR Senior Research Technician



# Larval Fish Otolith



- The first step to aging a larval fish is to remove their heads and extract their otoliths (ear bones) using a microscope and fine tools, such as a probe and forceps.
- The otoliths are then carefully removed and mounted onto a slide for reading.
- The daily growth estimates generated from otoliths provide us with yearly estimates in early life history growth and mortality.
- It's important to understand how the fish are growing, what linkages are within the food web and their successes in making it into the fishery.